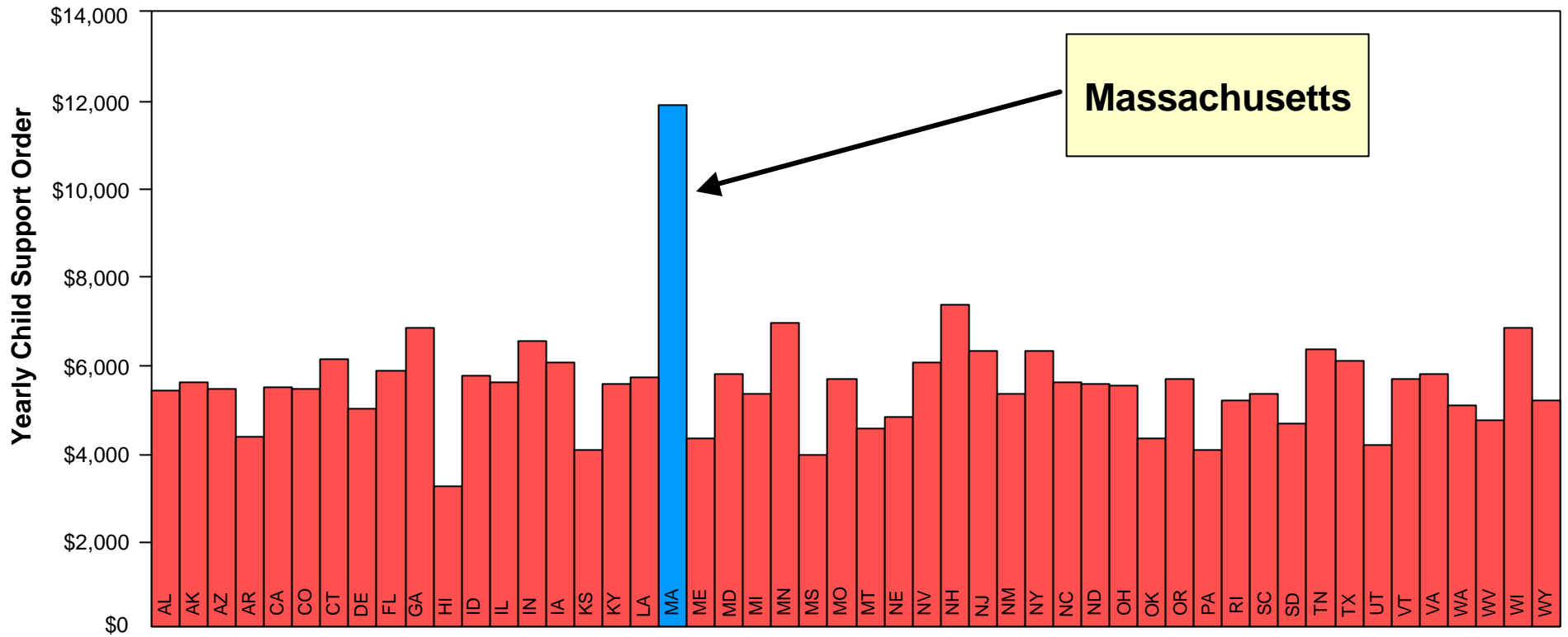


# Appendix: Supplemental Charts

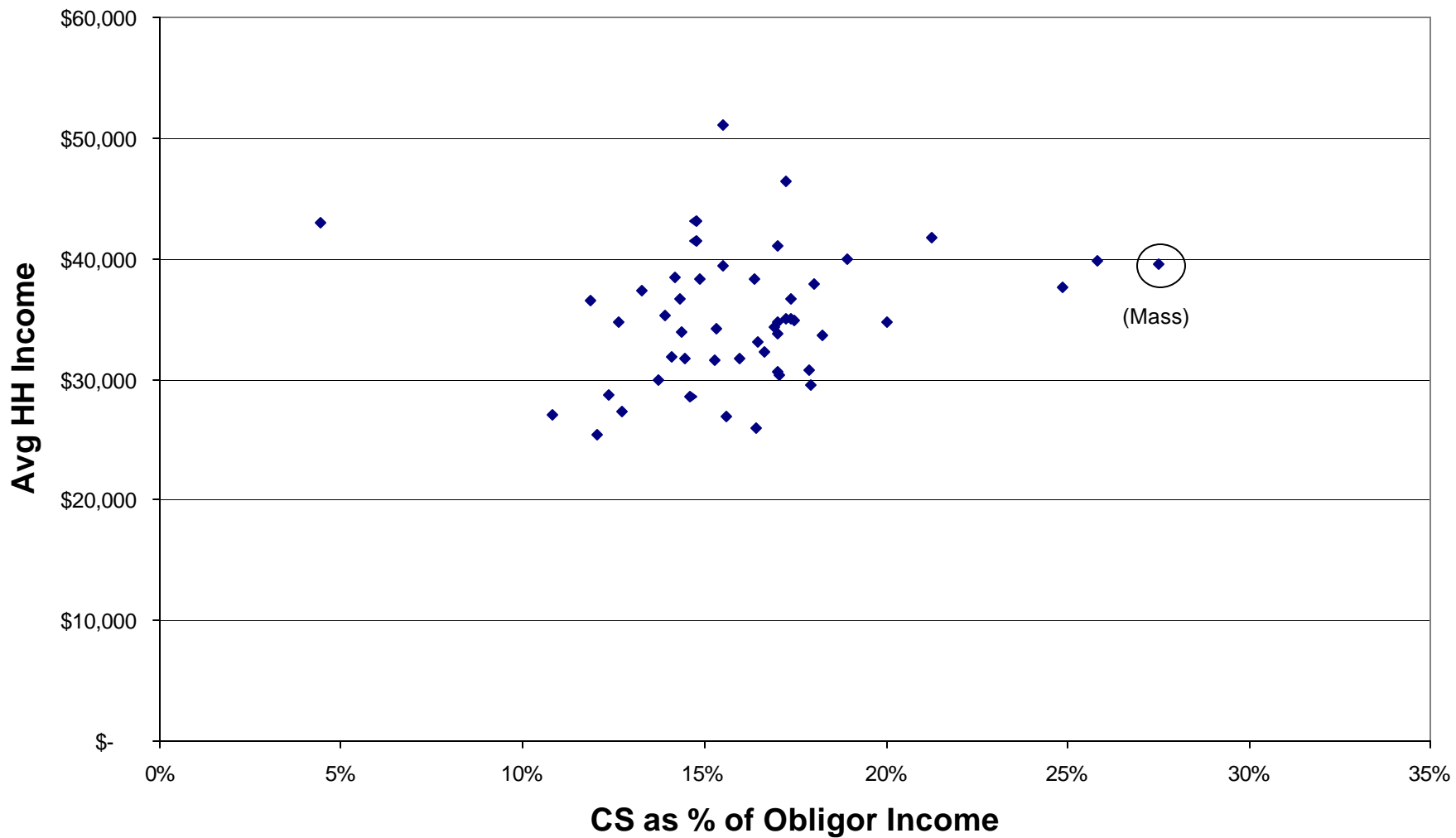
# Chart 1: Child Support Orders State by State Comparison

(Income Scenario: Non-custodial Parent=\$40K, Custodial Parent=\$15K)

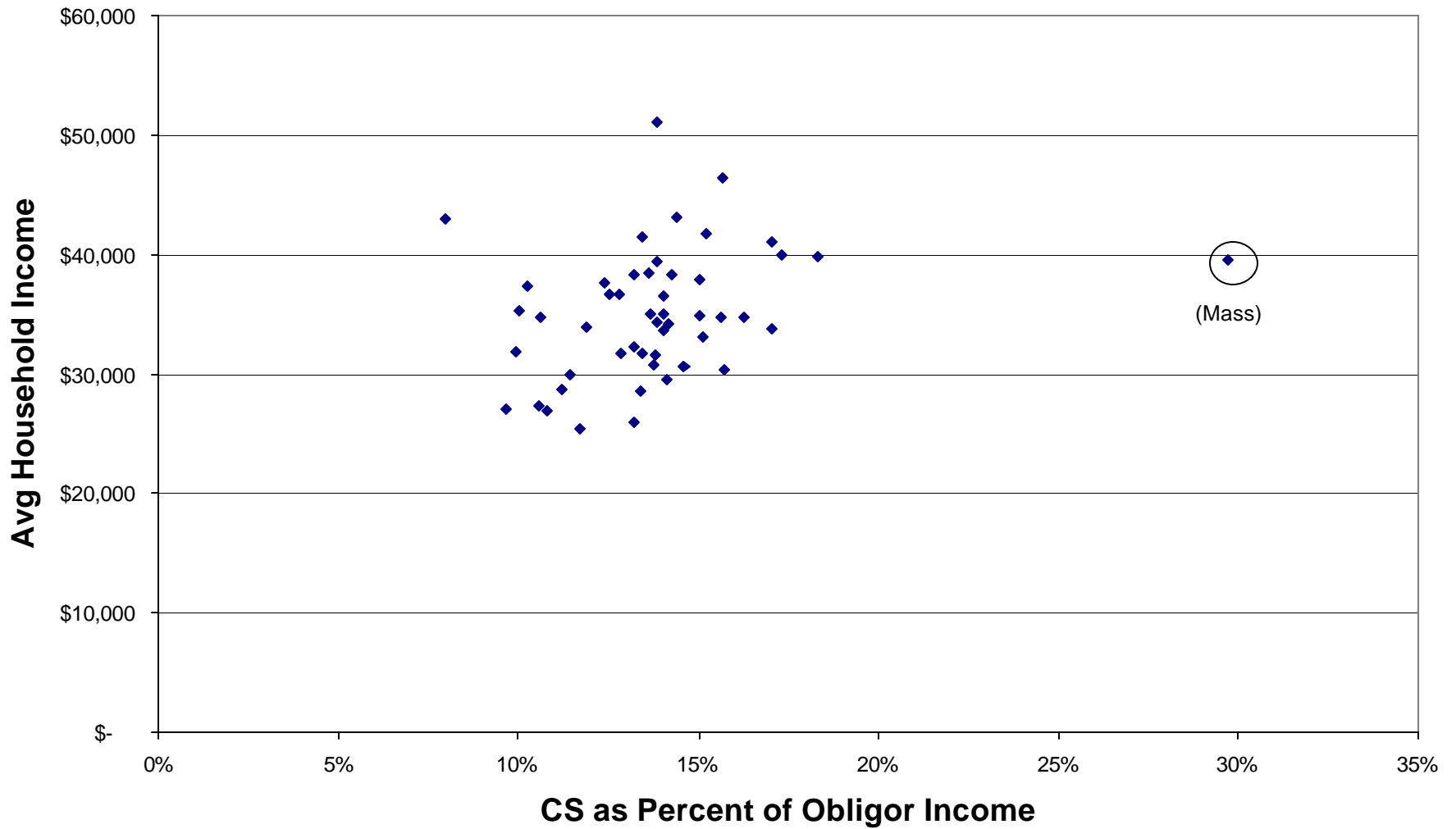


Source: *Massachusetts Lawyer's Weekly*, November 1995

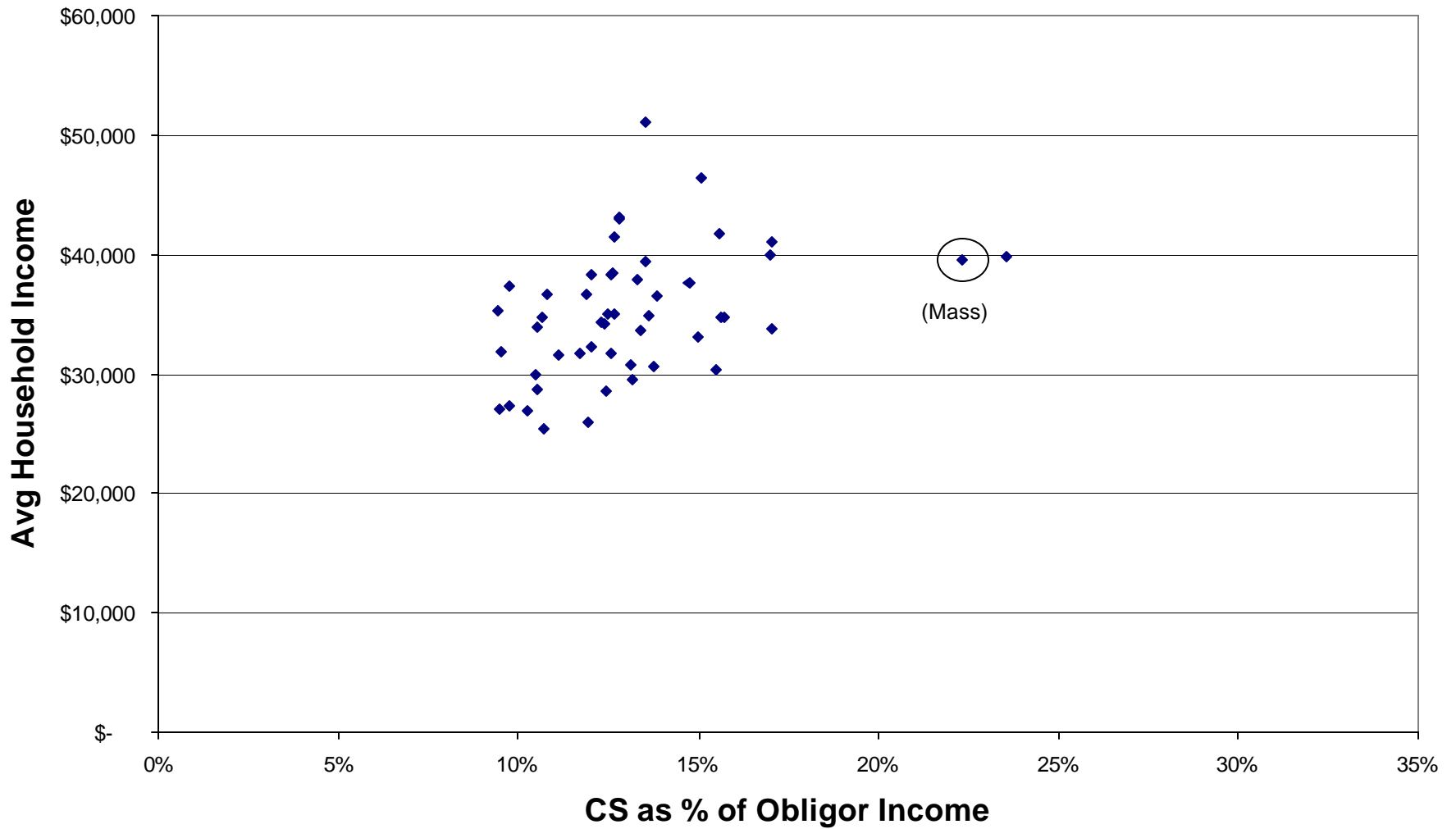
**Chart 1A: Scenario: NCP \$20K; CP \$15K**



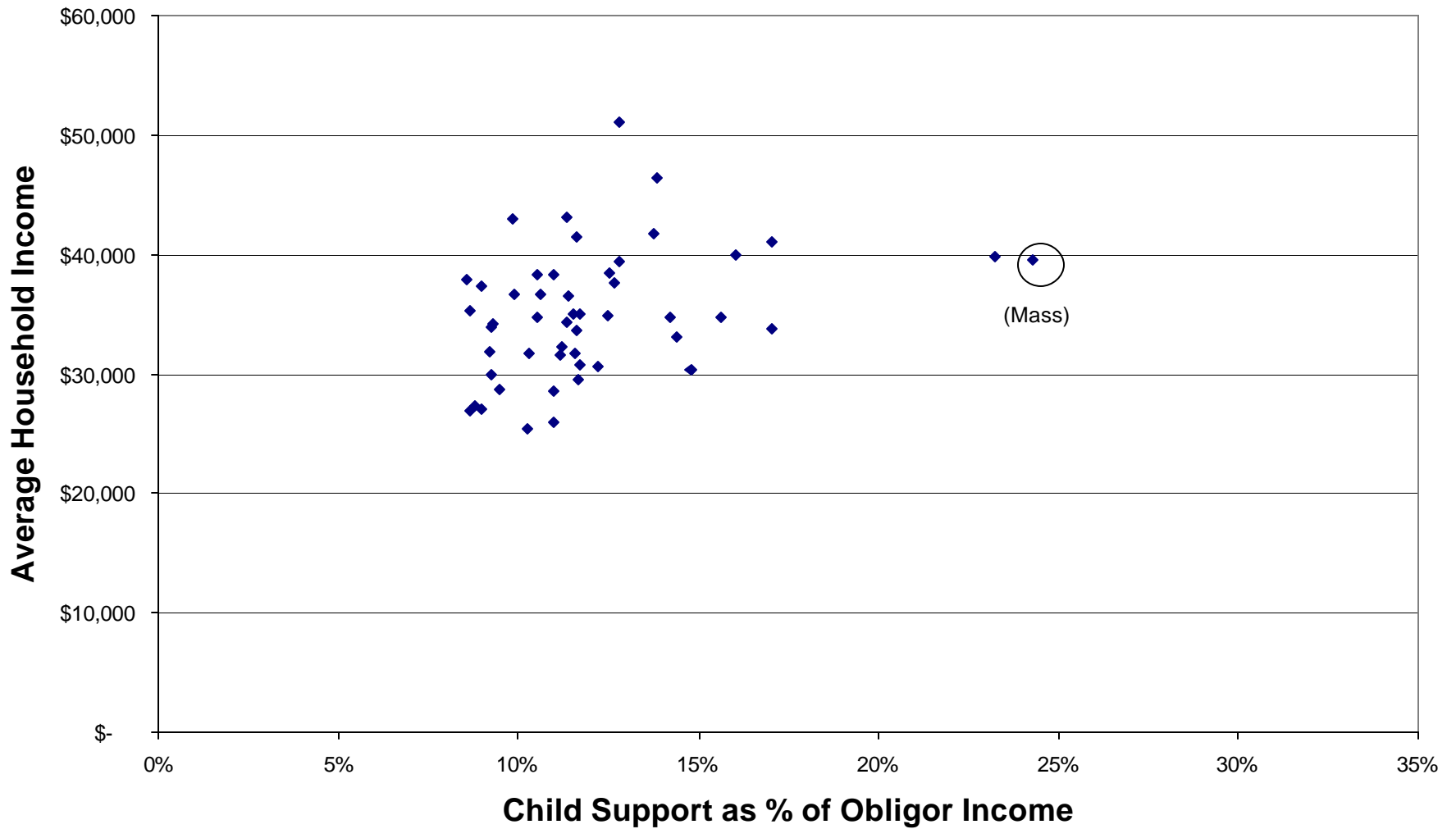
**Chart 1B: Scenario: NCP \$40K; CP \$15K**



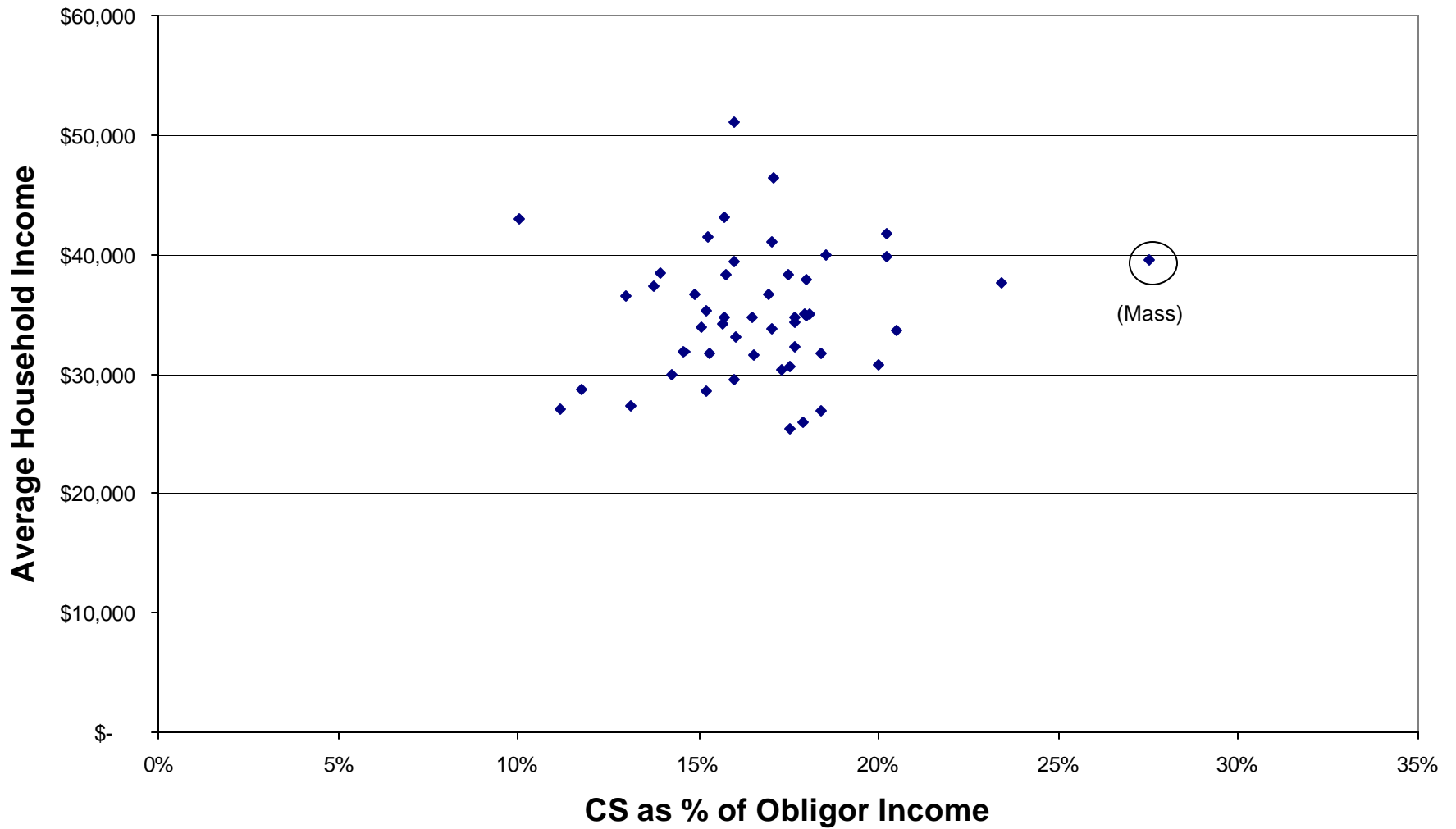
**Chart 1C: Scenario: NCP \$45K; CP \$30K**



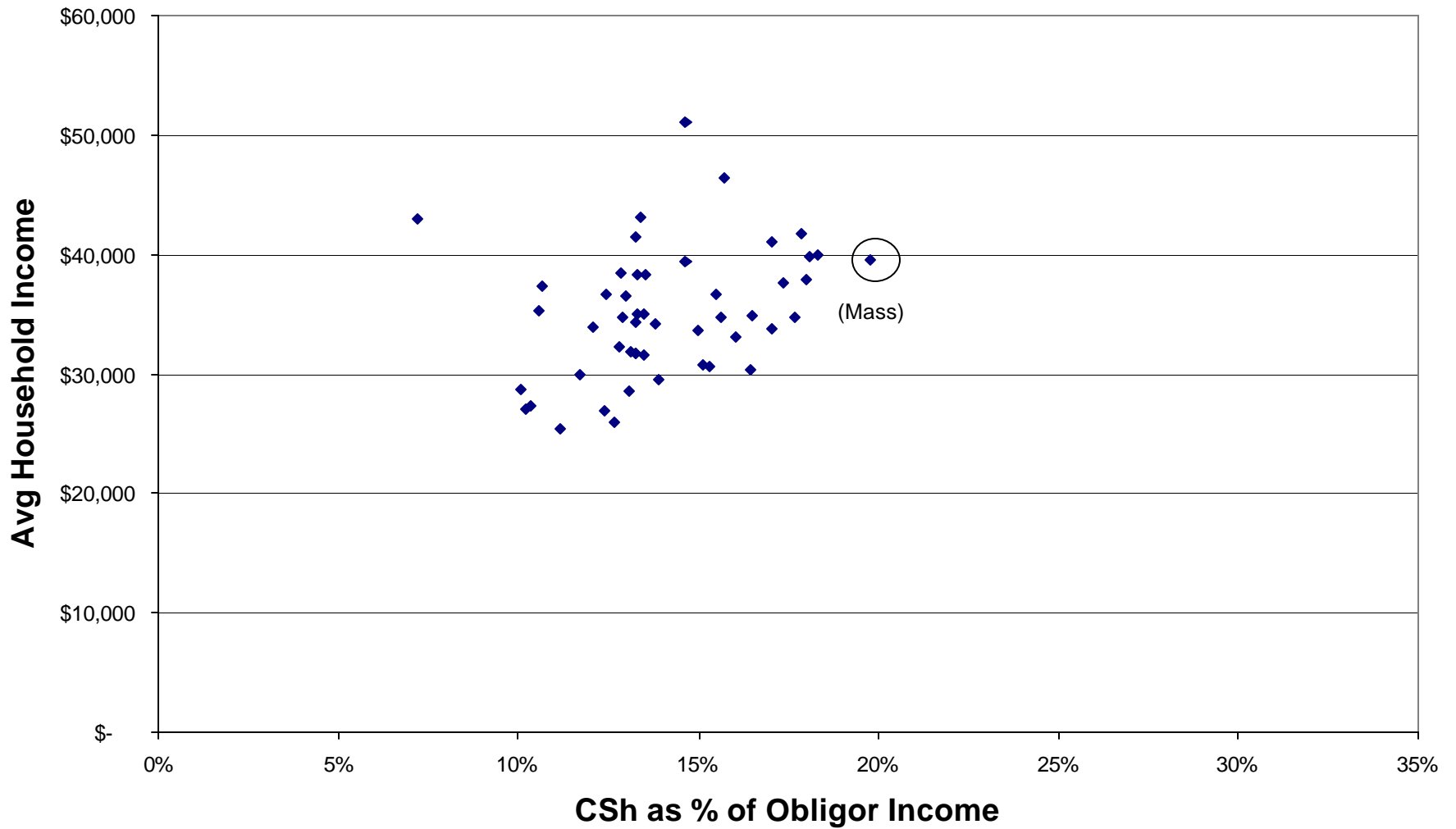
**Chart 1D: Scenario: NCP \$70K; CP \$30K**



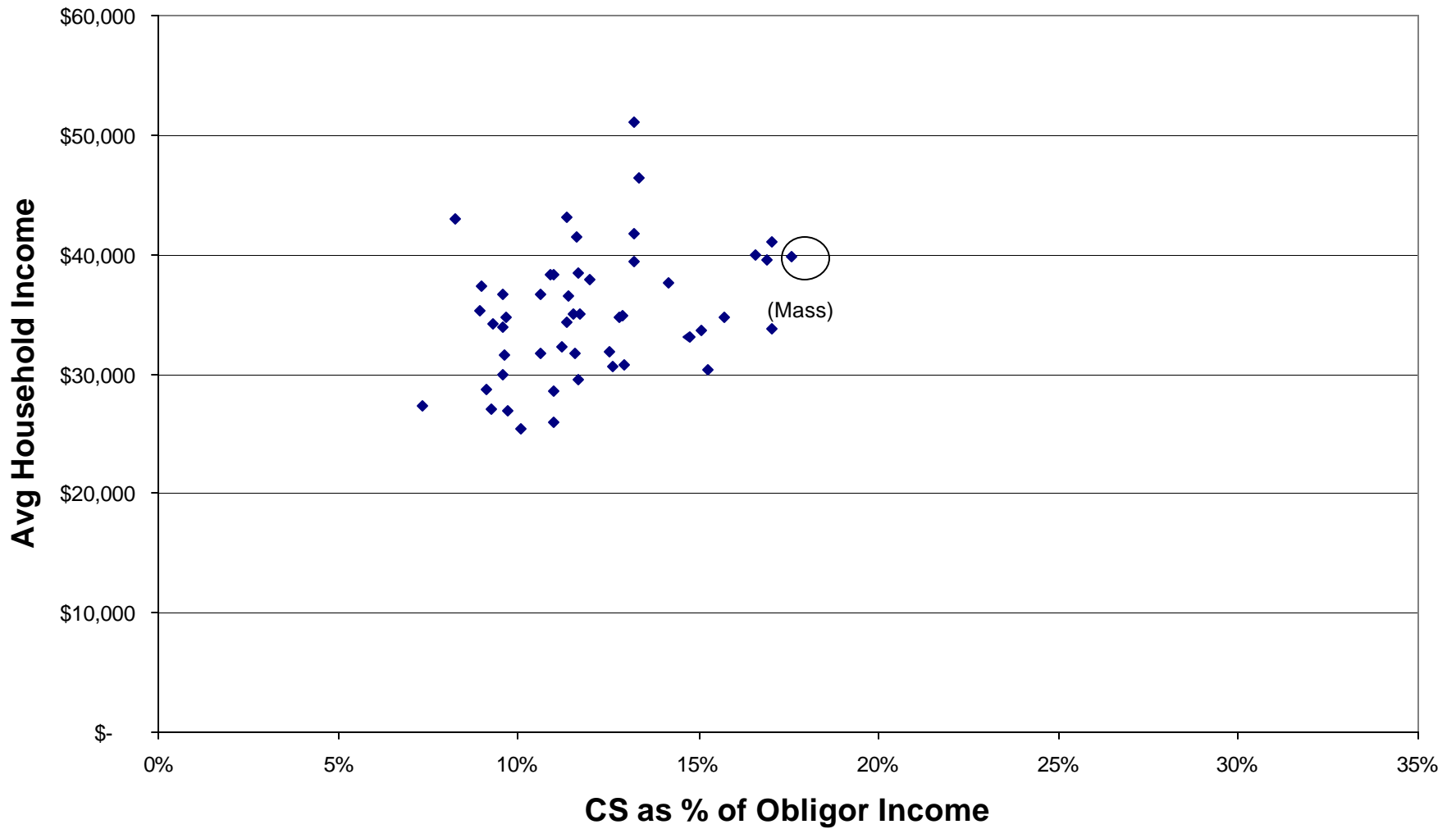
**Chart 1E: Scenario: NCP \$15K; CP \$15K**



**Chart 1F: Scenario: NCP \$30K; CP \$30K**

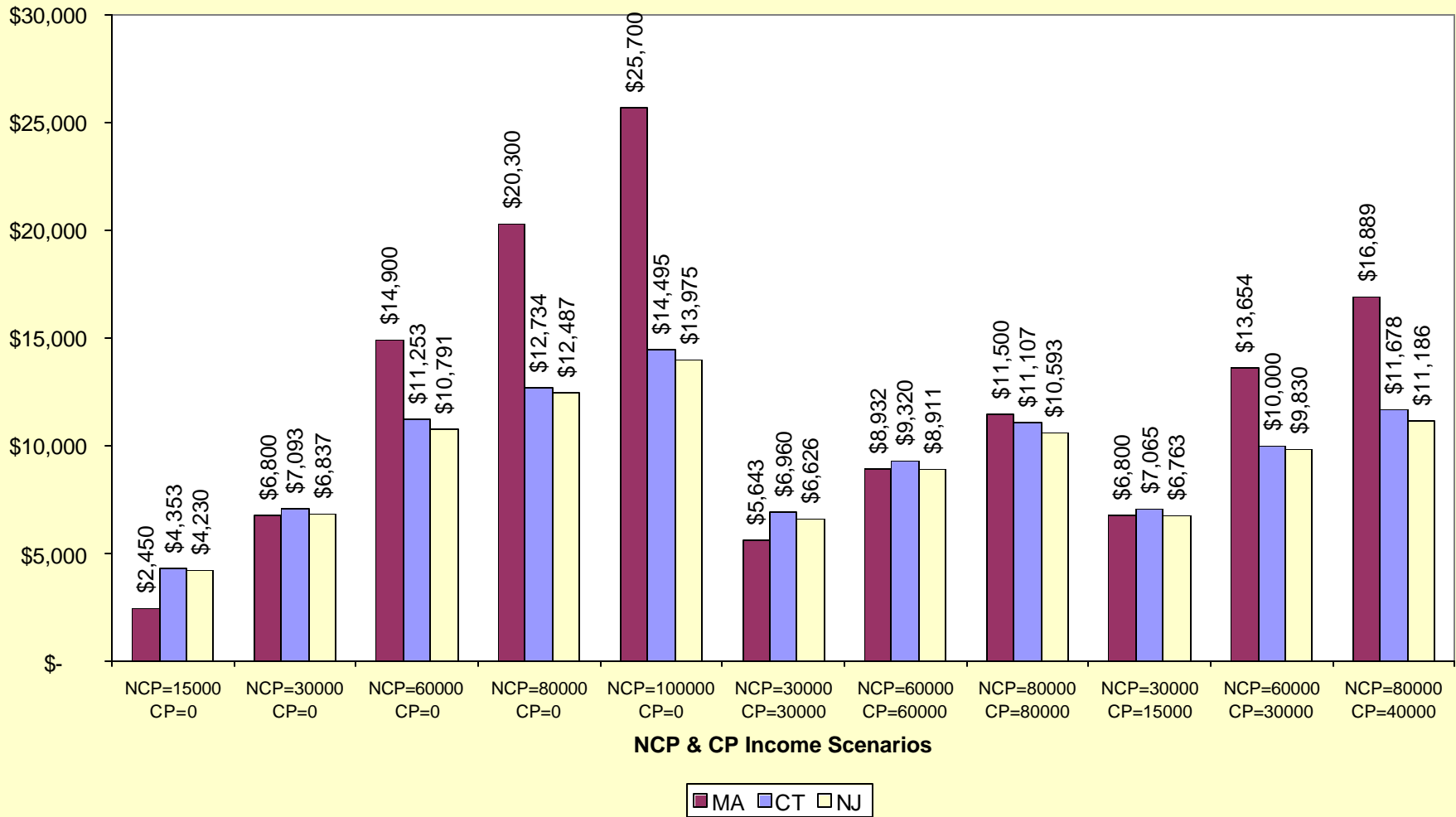


**Chart 1G: Scenario: NCP \$50K; CP \$50K**



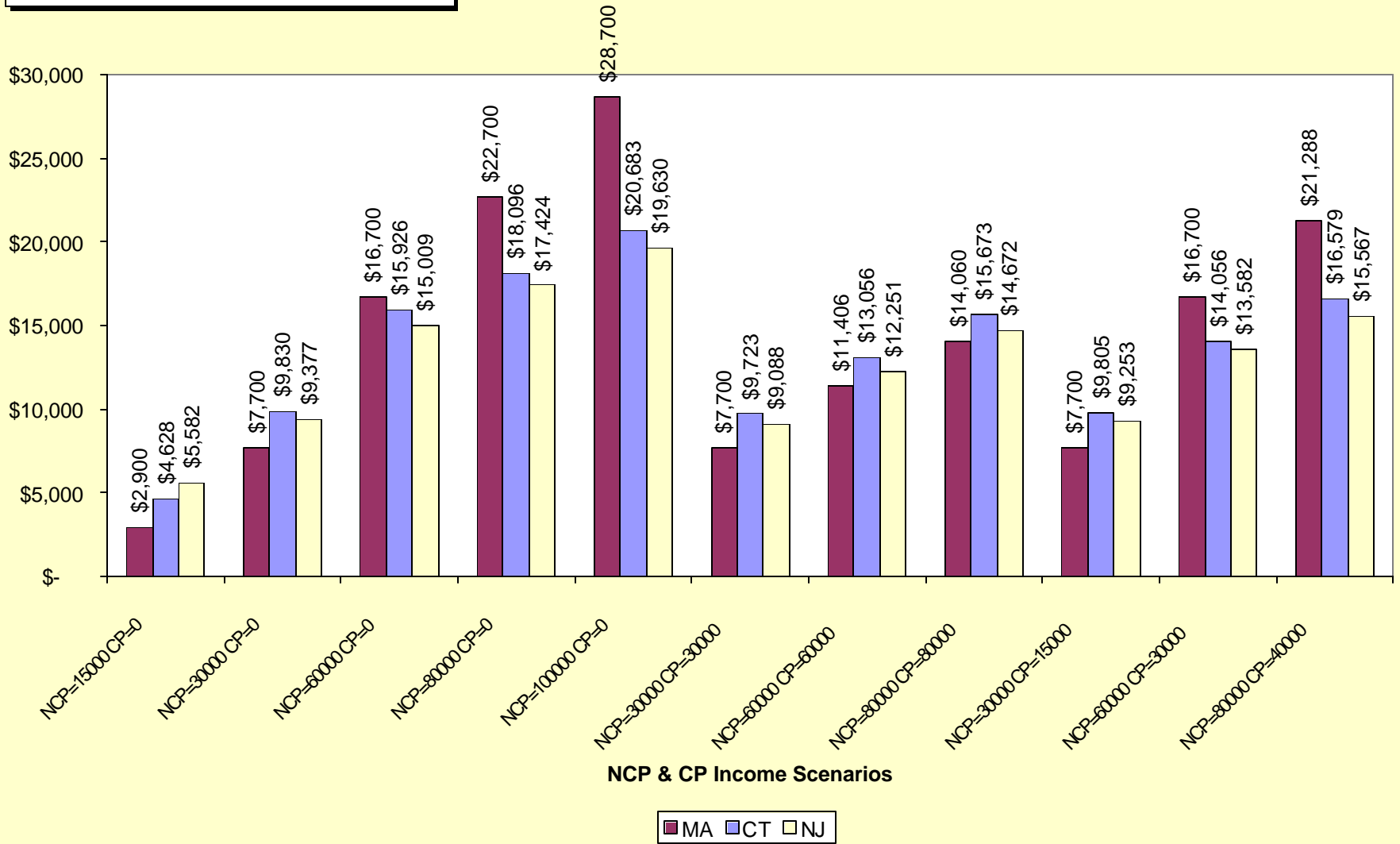
# Annual Child Support

(MA, NJ, CT: Assumes 1 child)



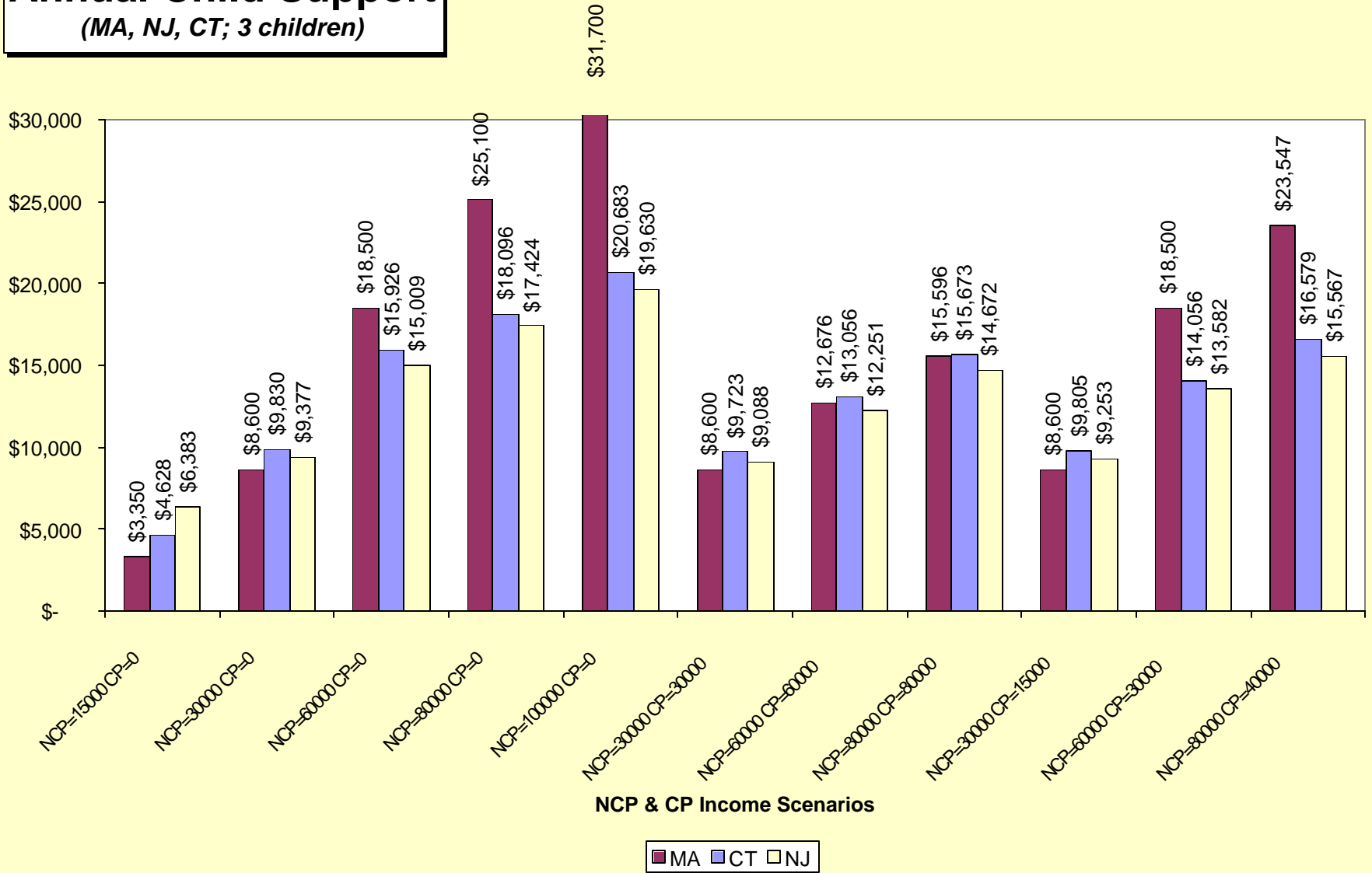
# Annual Child Support

(MA, NJ, CT; 2 children)

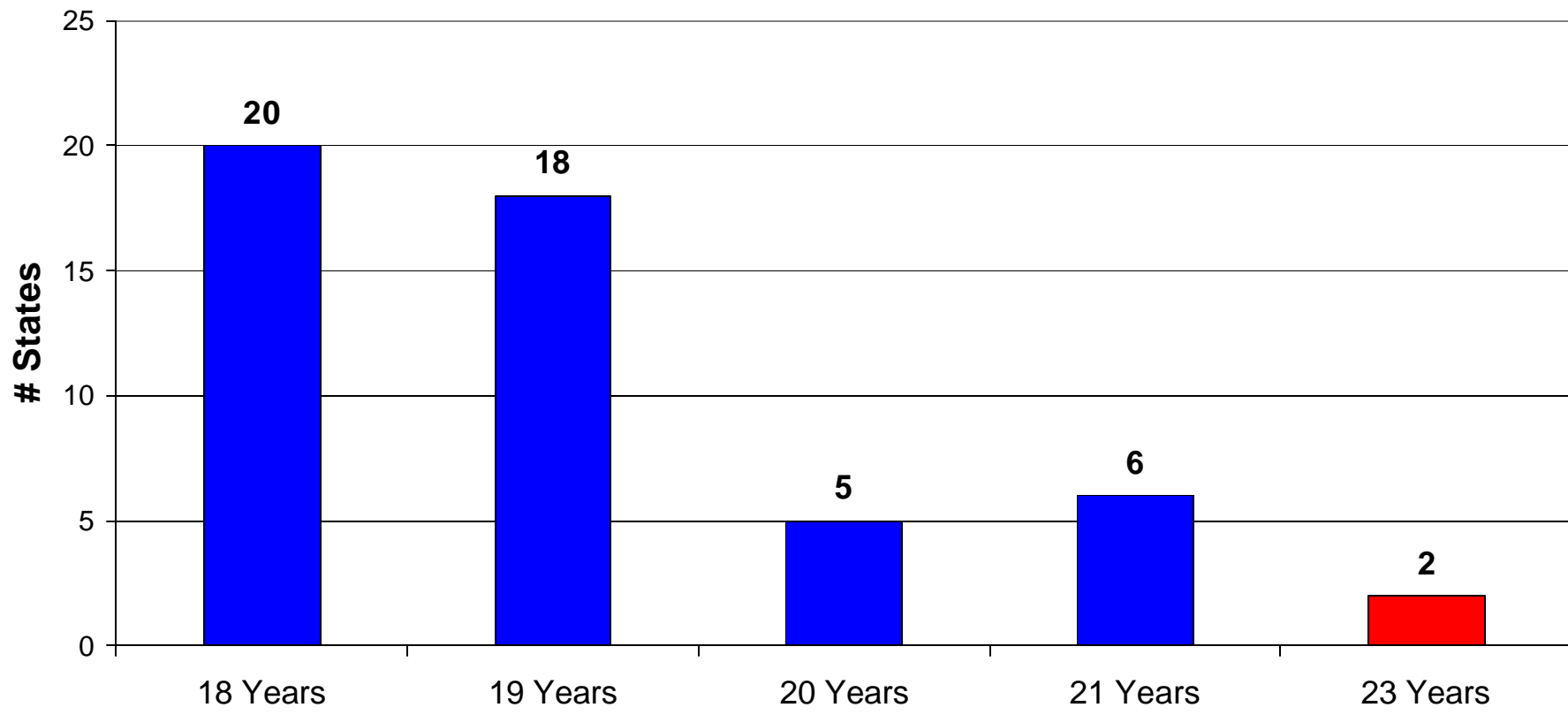


# Annual Child Support

(MA, NJ, CT; 3 children)



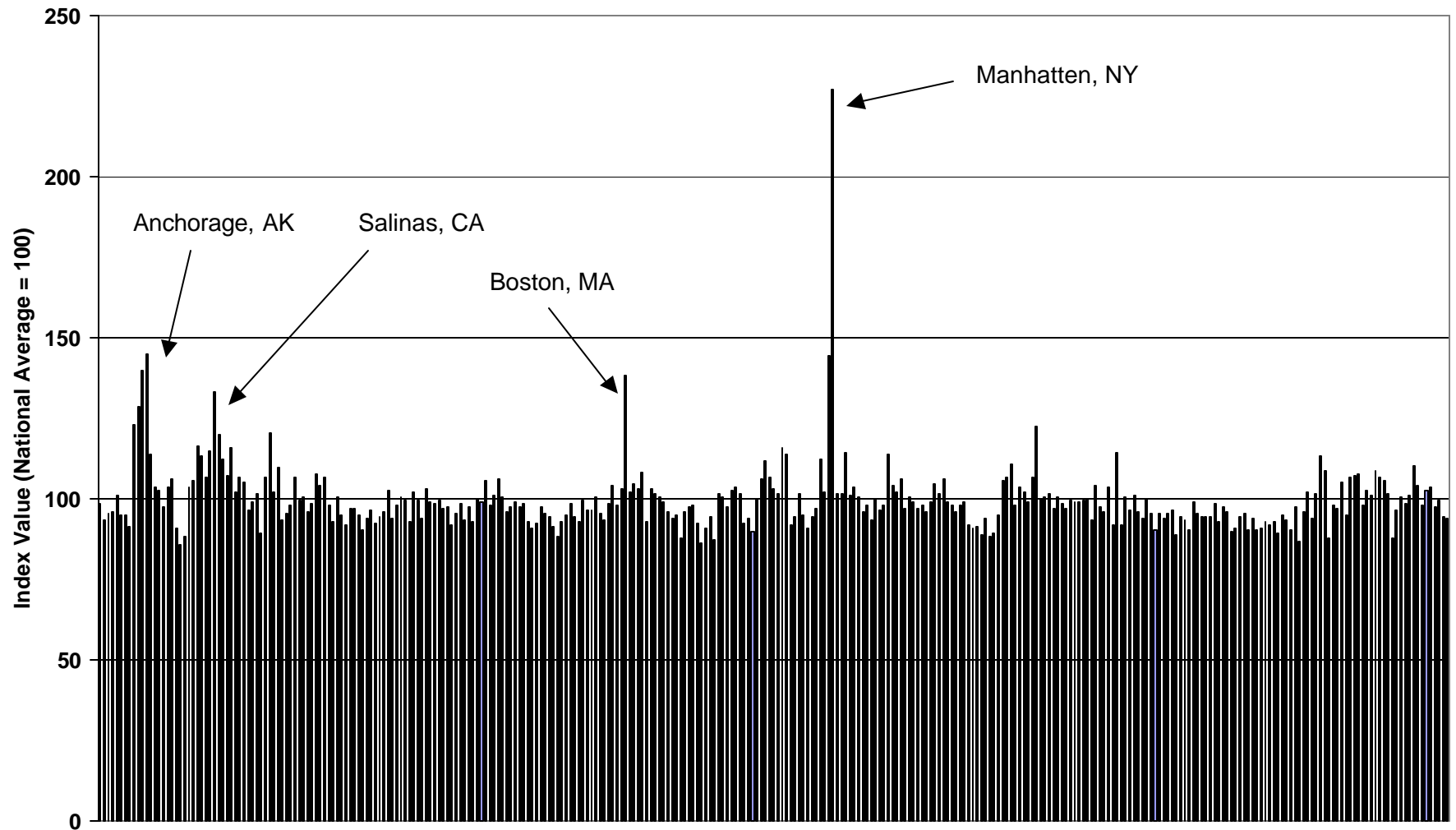
## Number of States by Age of Child Support Emancipation



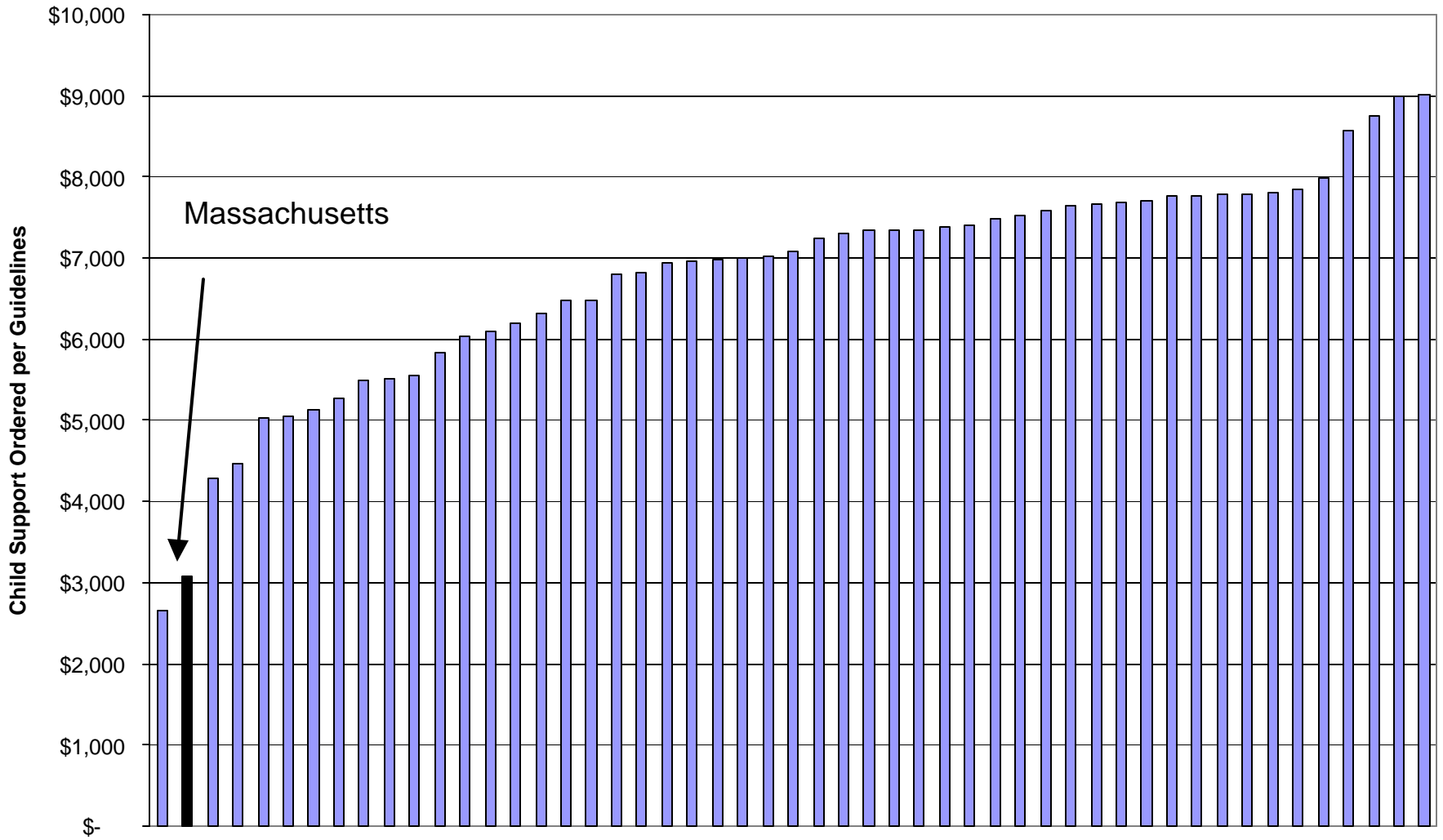
Source: SupportGuidelines.com; "WHAT CONSTITUTES EMANCIPATION TO RELEASE A PARENT FROM A CHILD SUPPORT OBLIGATION"

# Cost of Living Index Data for Q3 1997

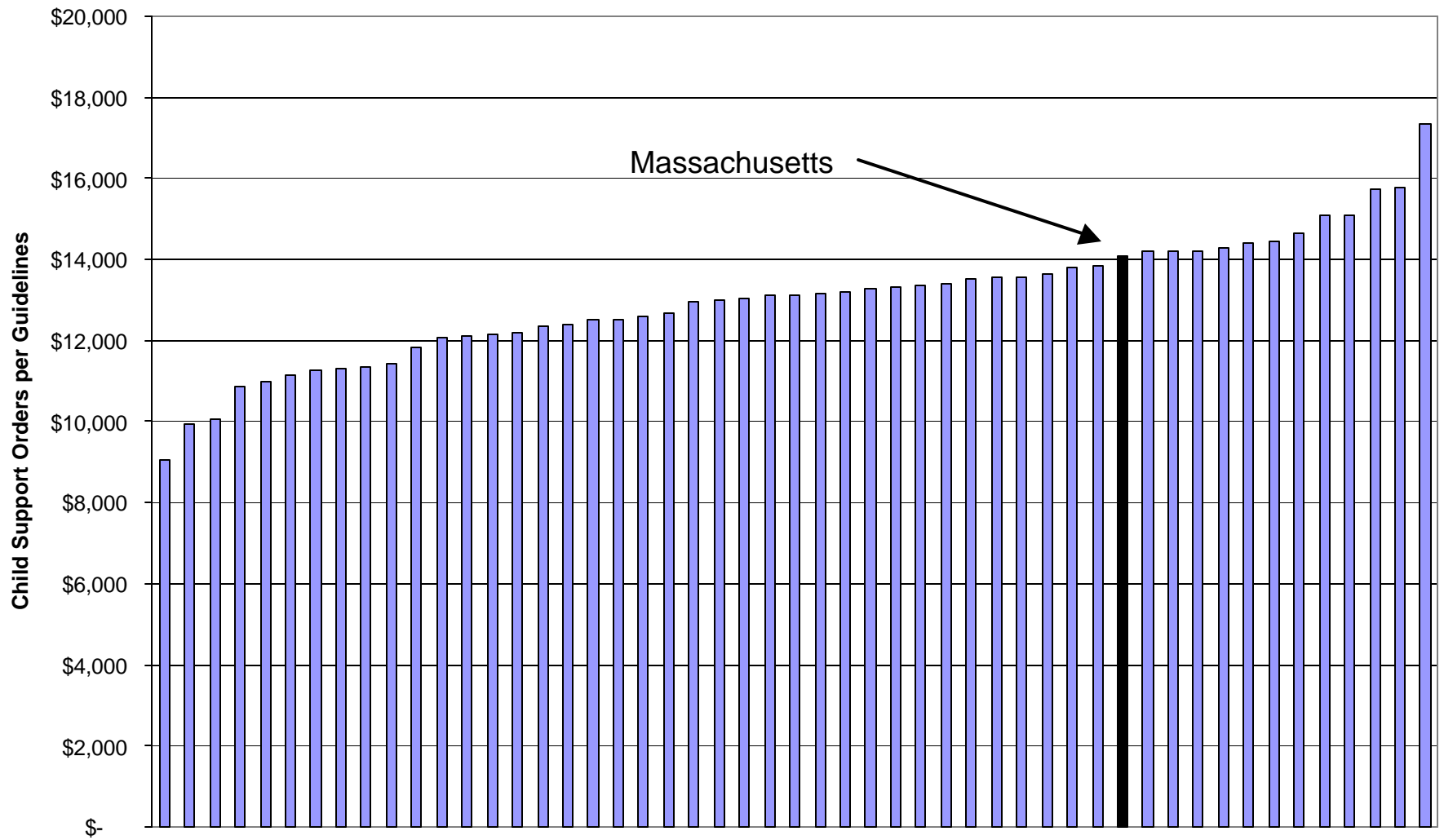
(American Chamber of Commerce Research Association)



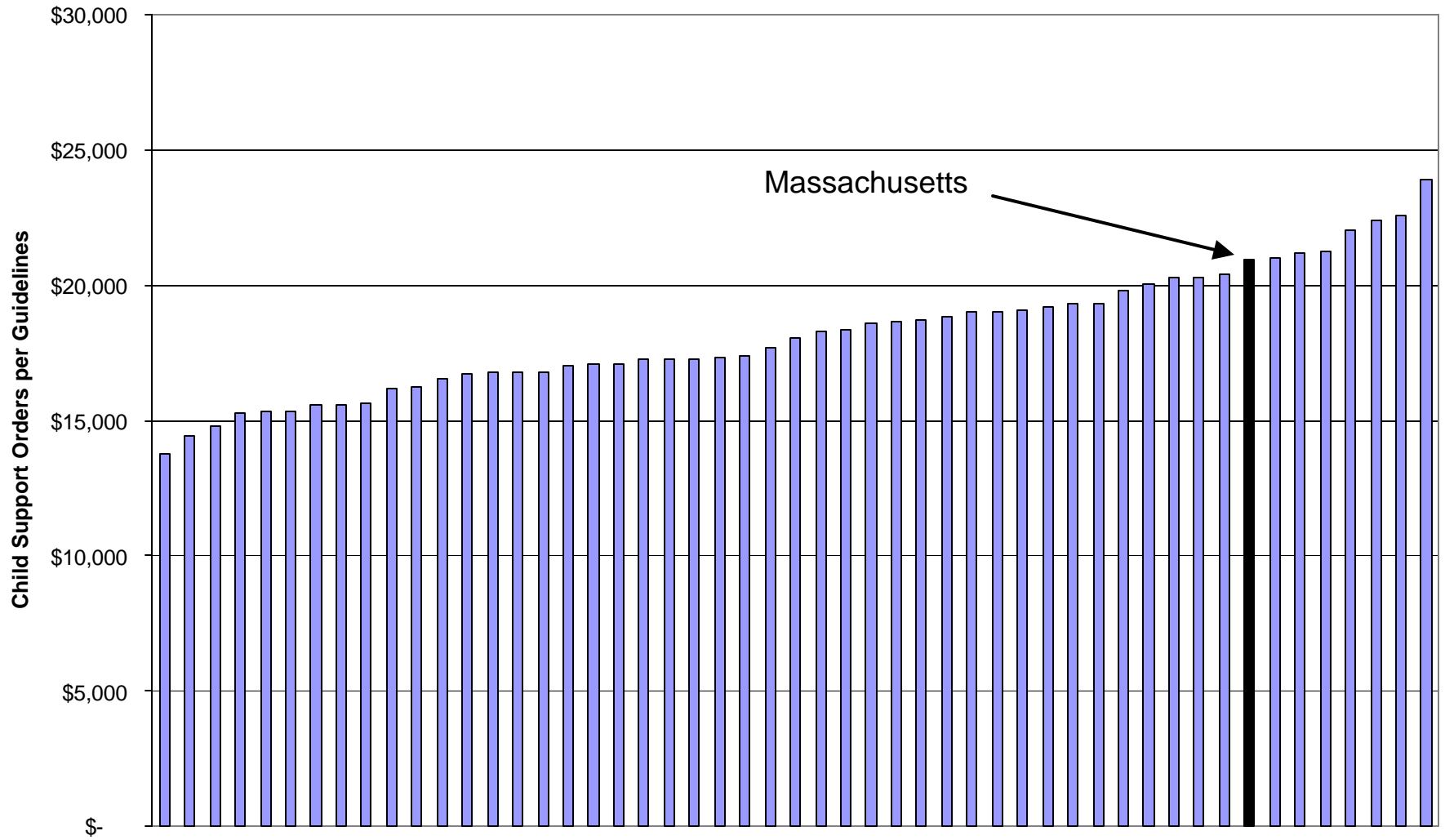
### Morgan-Lino Case 1 Dispersion (Two Children)



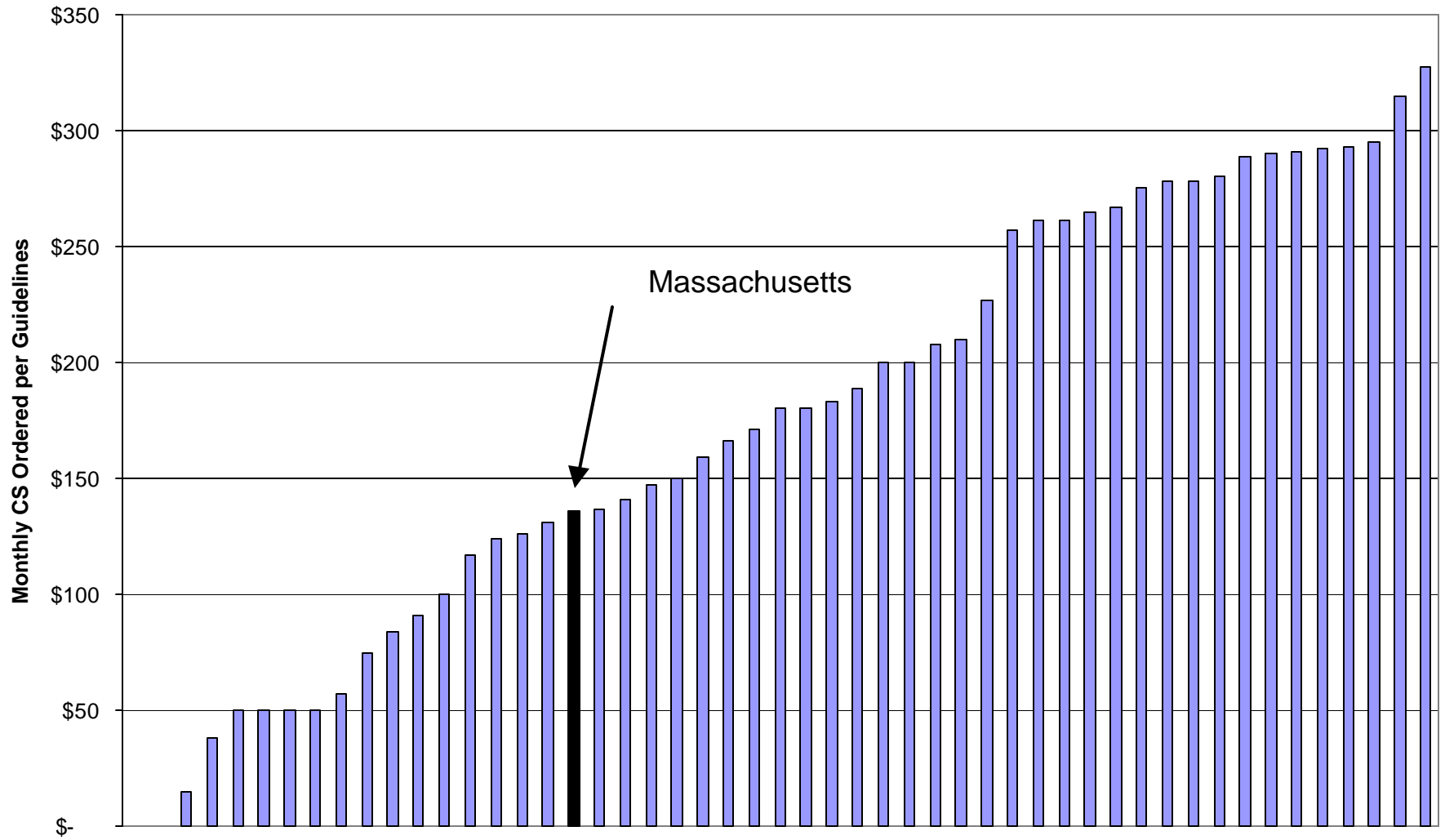
### Morgan-Lino Case 2 Dispersion (Two Children)



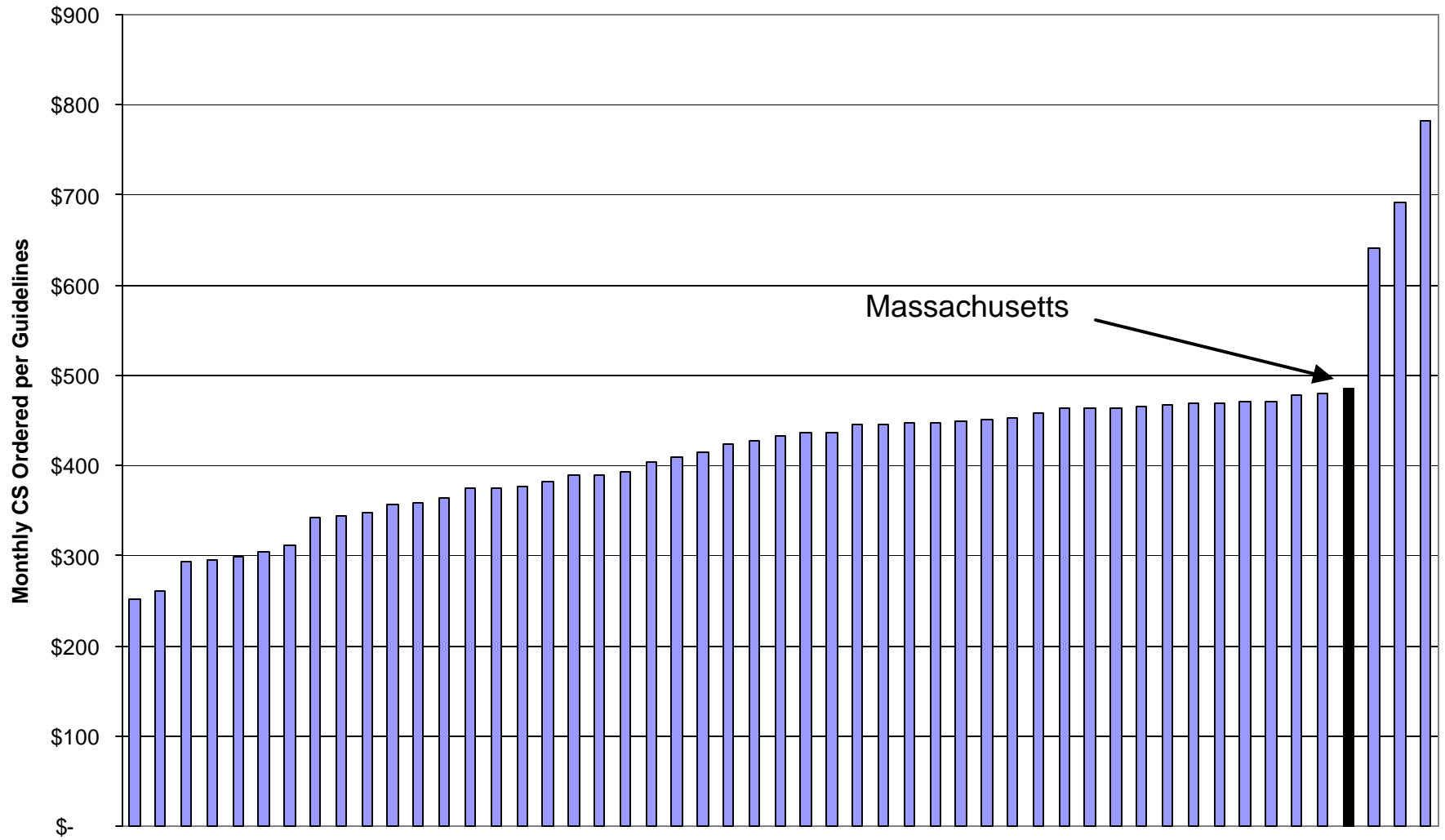
### Morgan-Lino Case 3 Dispersion (Two Children)



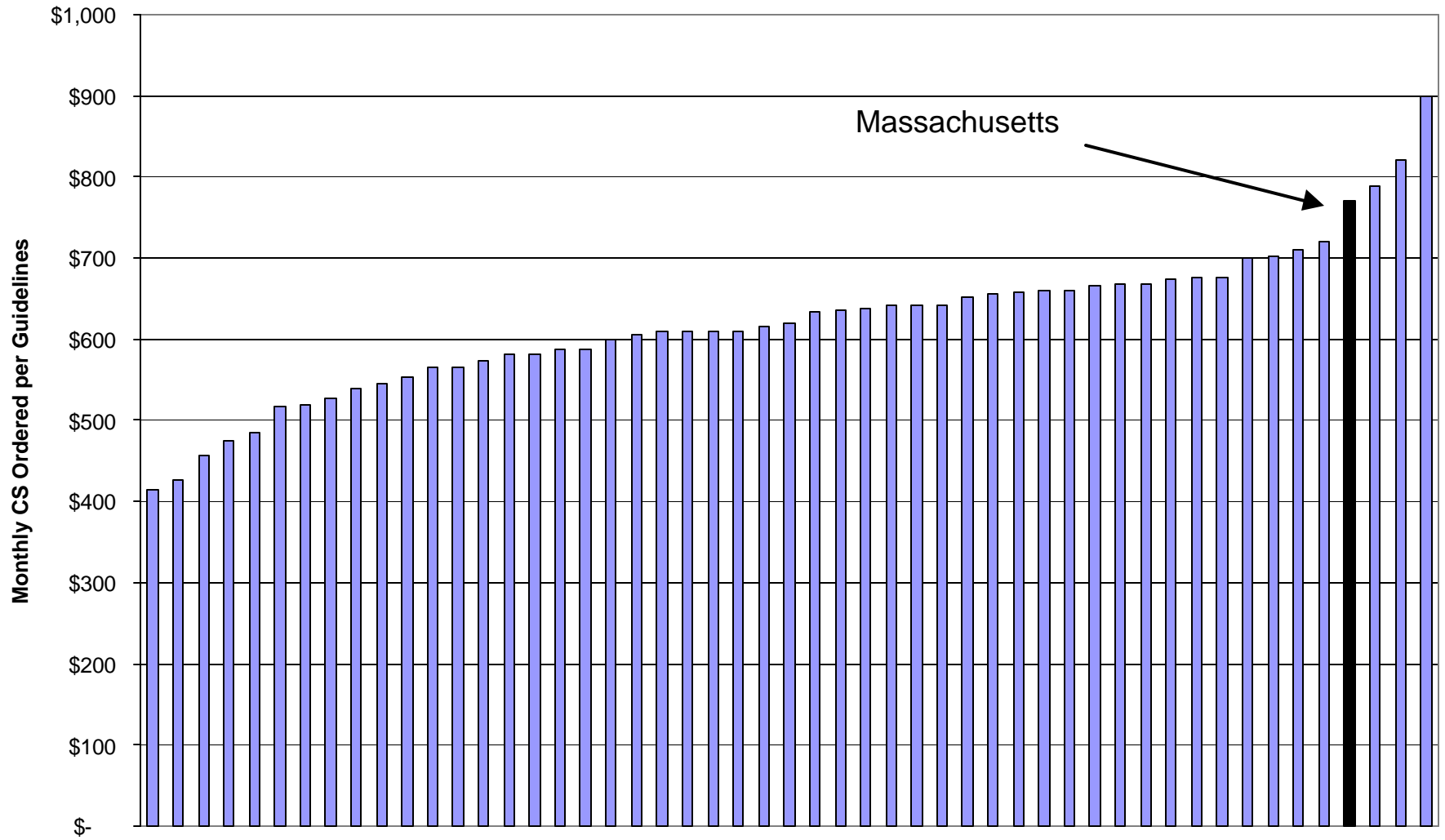
### Pirog Case B Dispersion (Two Children)



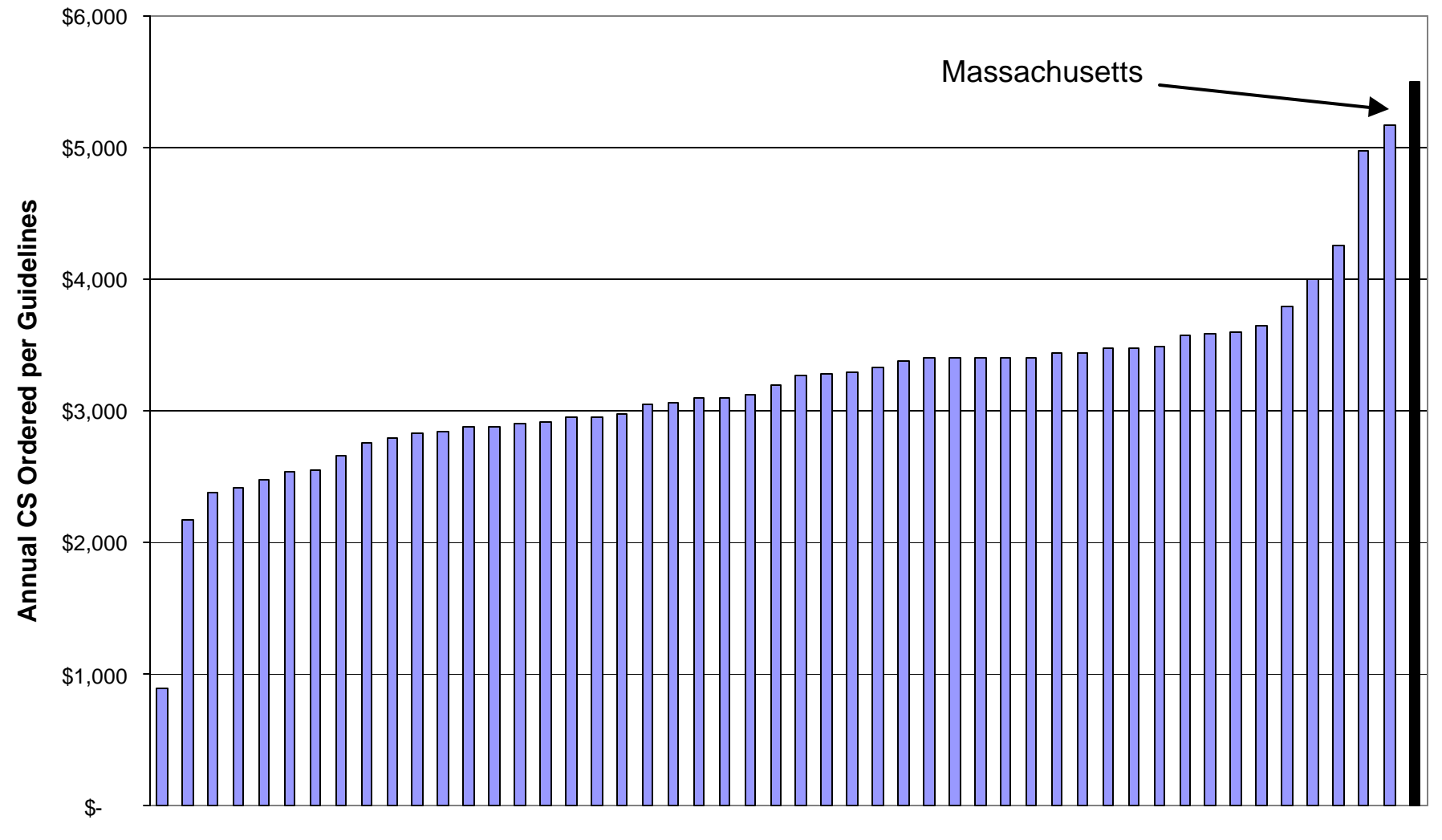
### Pirog Case C Dispersion (Two Children)



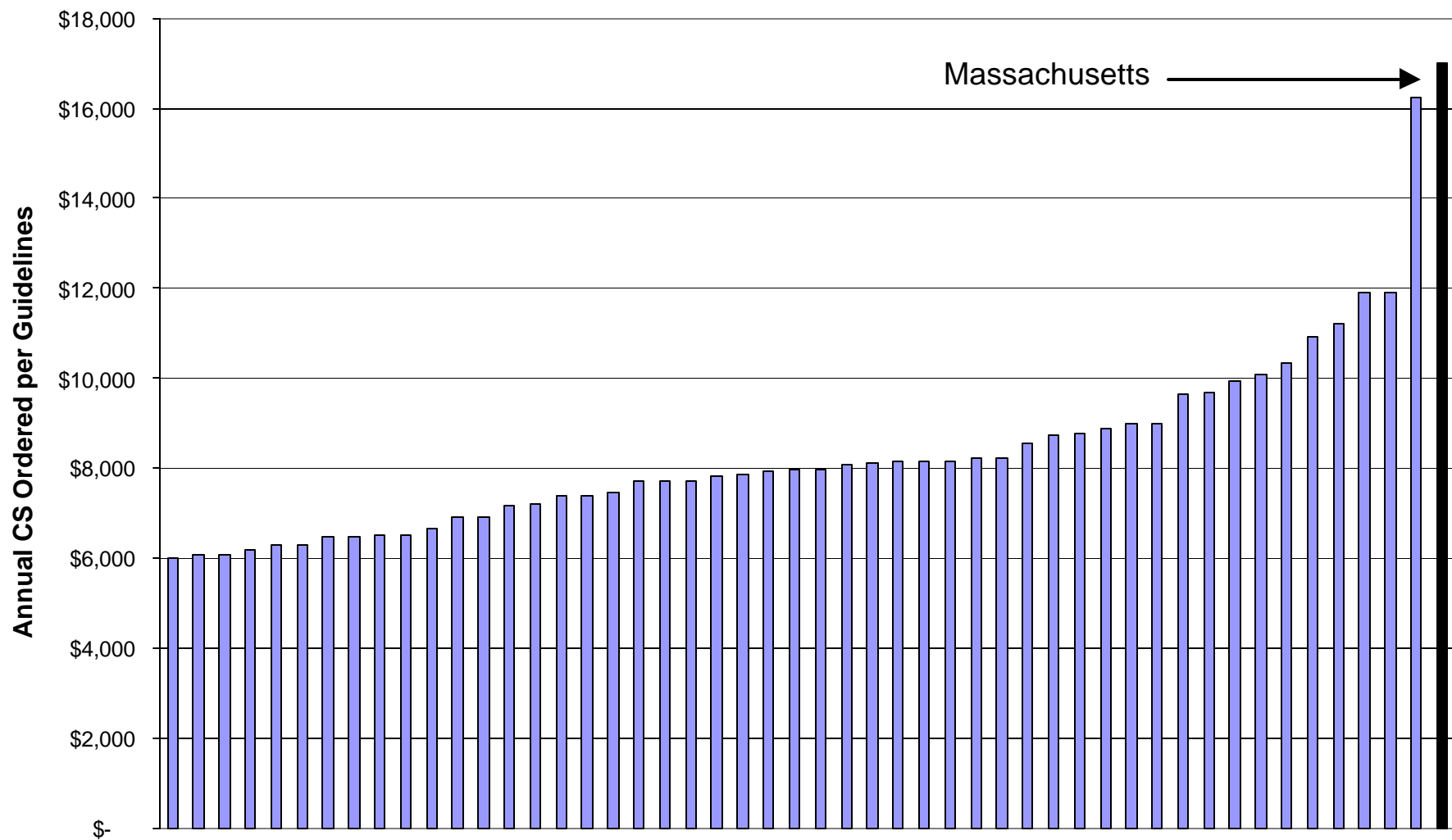
### Pirog Case D Dispersion (Two Children)



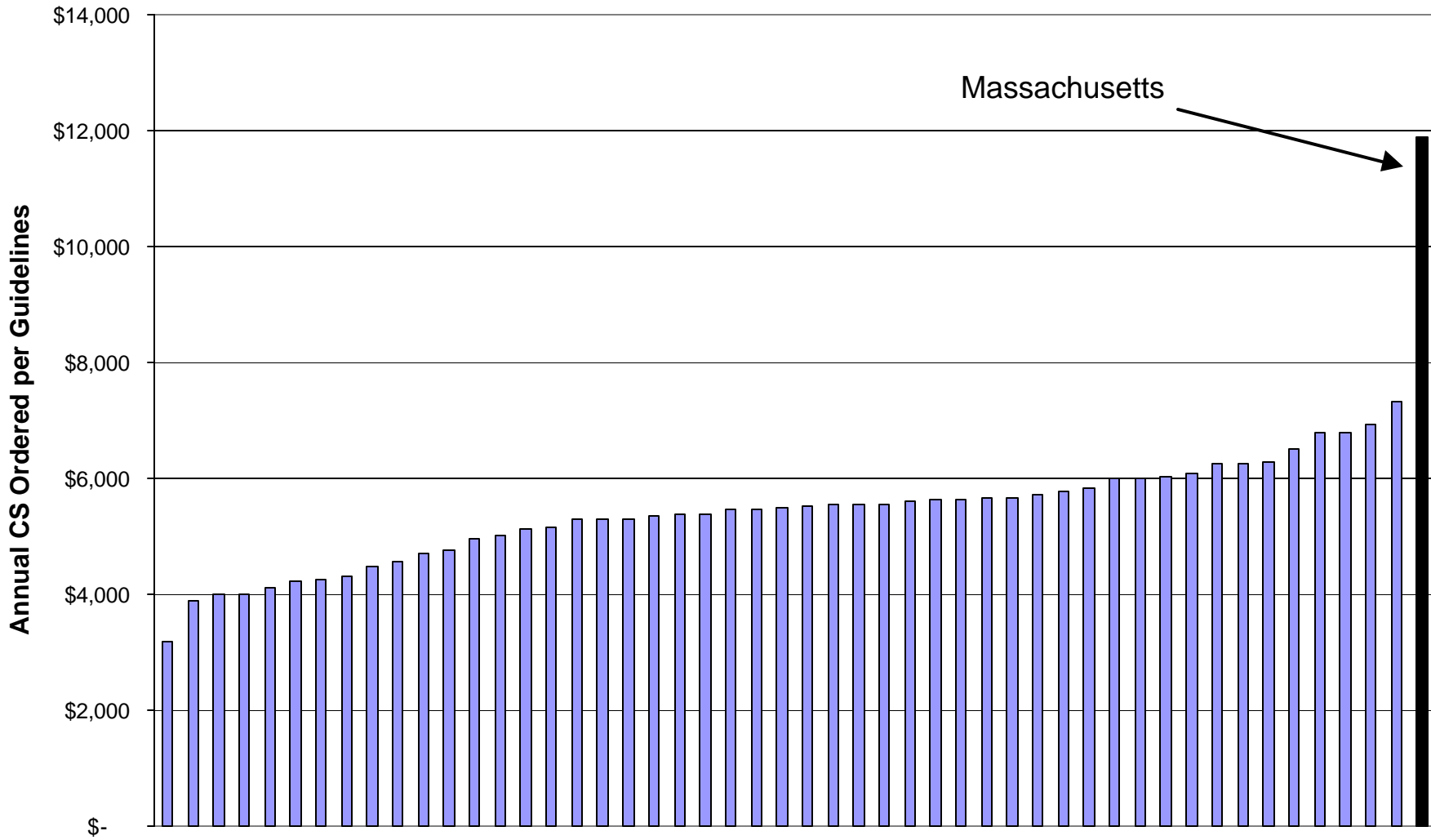
**Fassler Case - Non-Cust Parent = \$20000 Cust Parent = \$15000  
(One Child)**



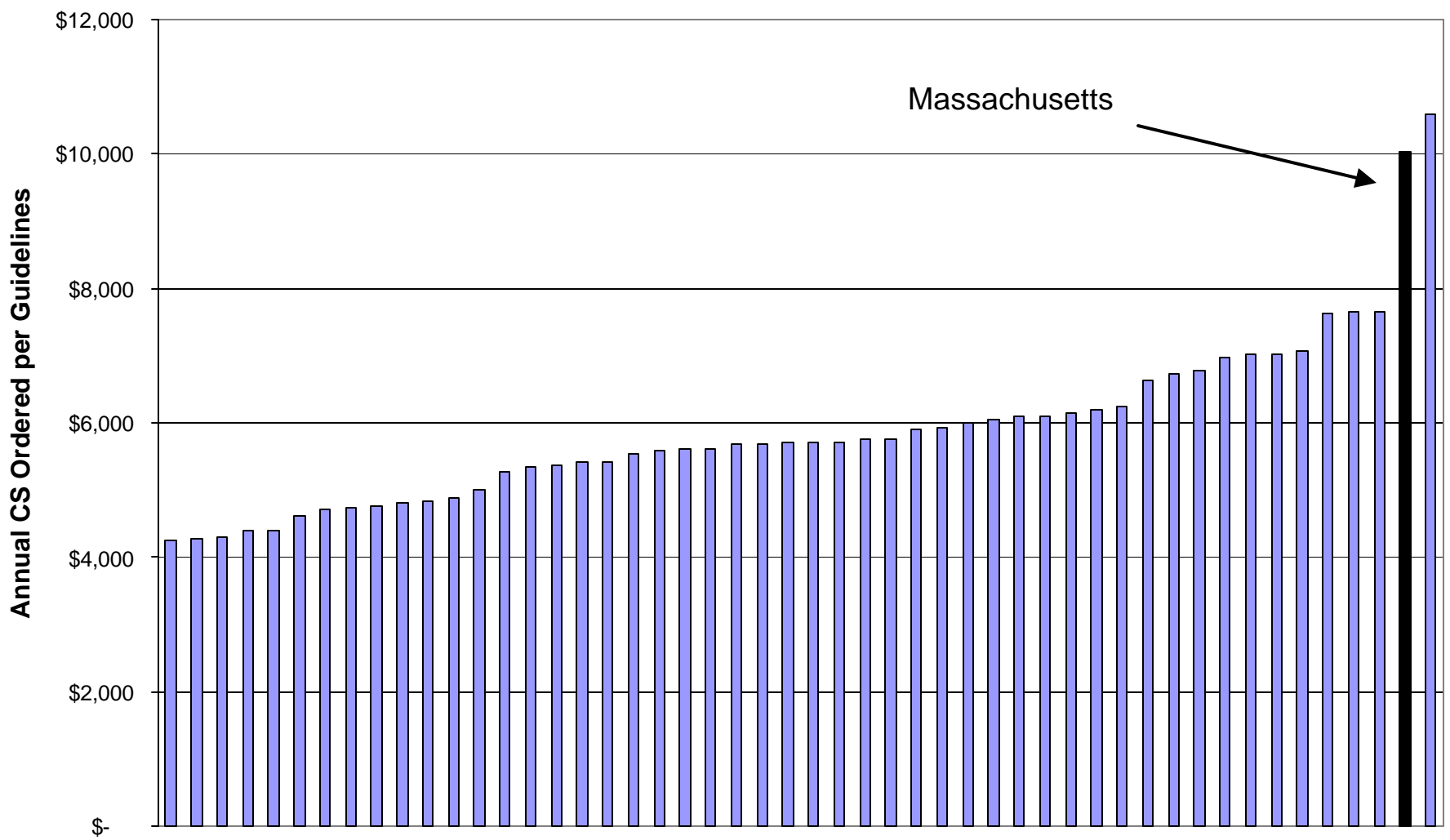
**Fassler Case - Non-Cust Parent = \$70000 Cust Parent = \$30000  
(One Child)**



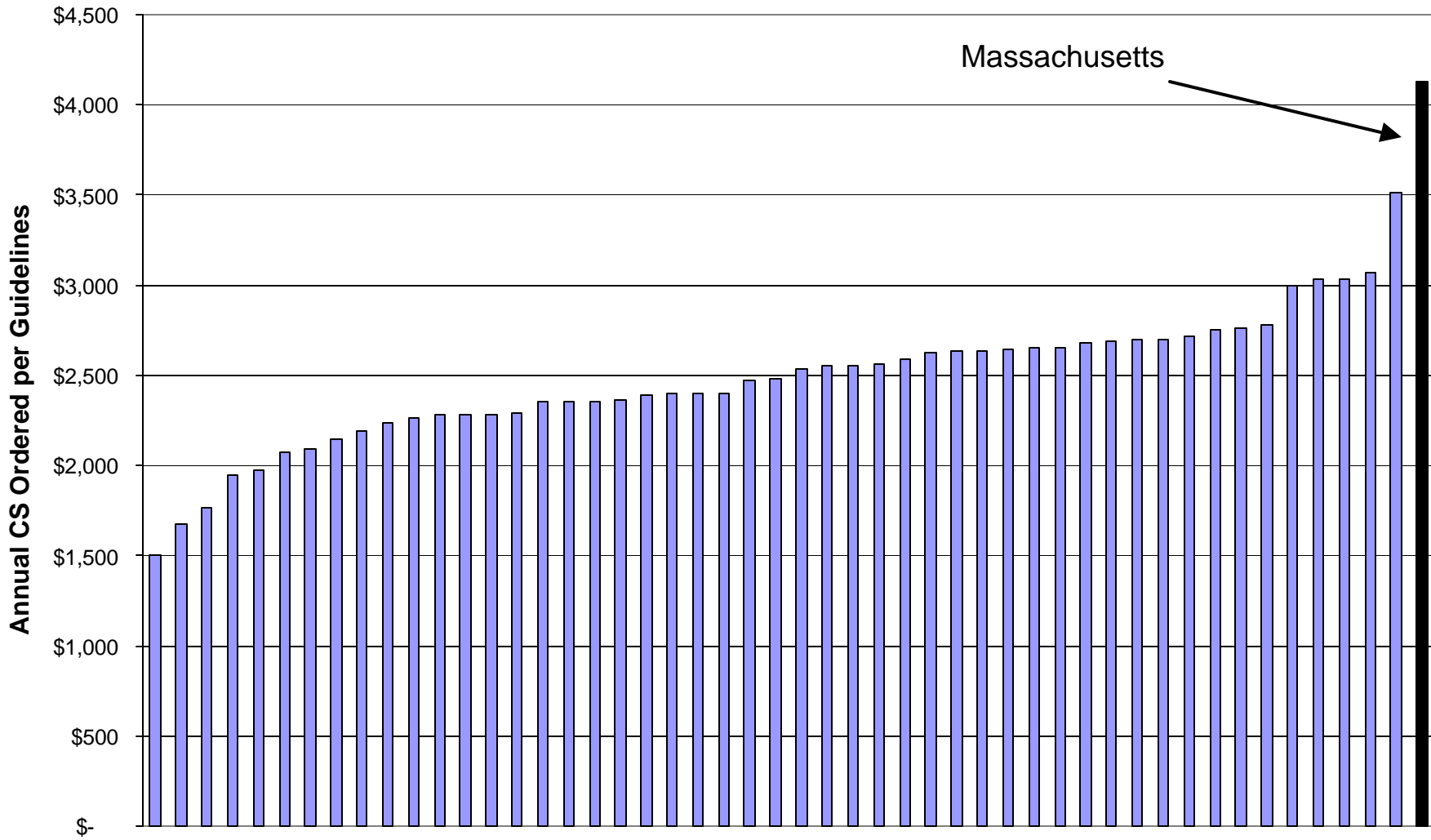
Fassler Case - Non-Cust Parent = \$40000 Cust Parent = \$15000  
(One Child)



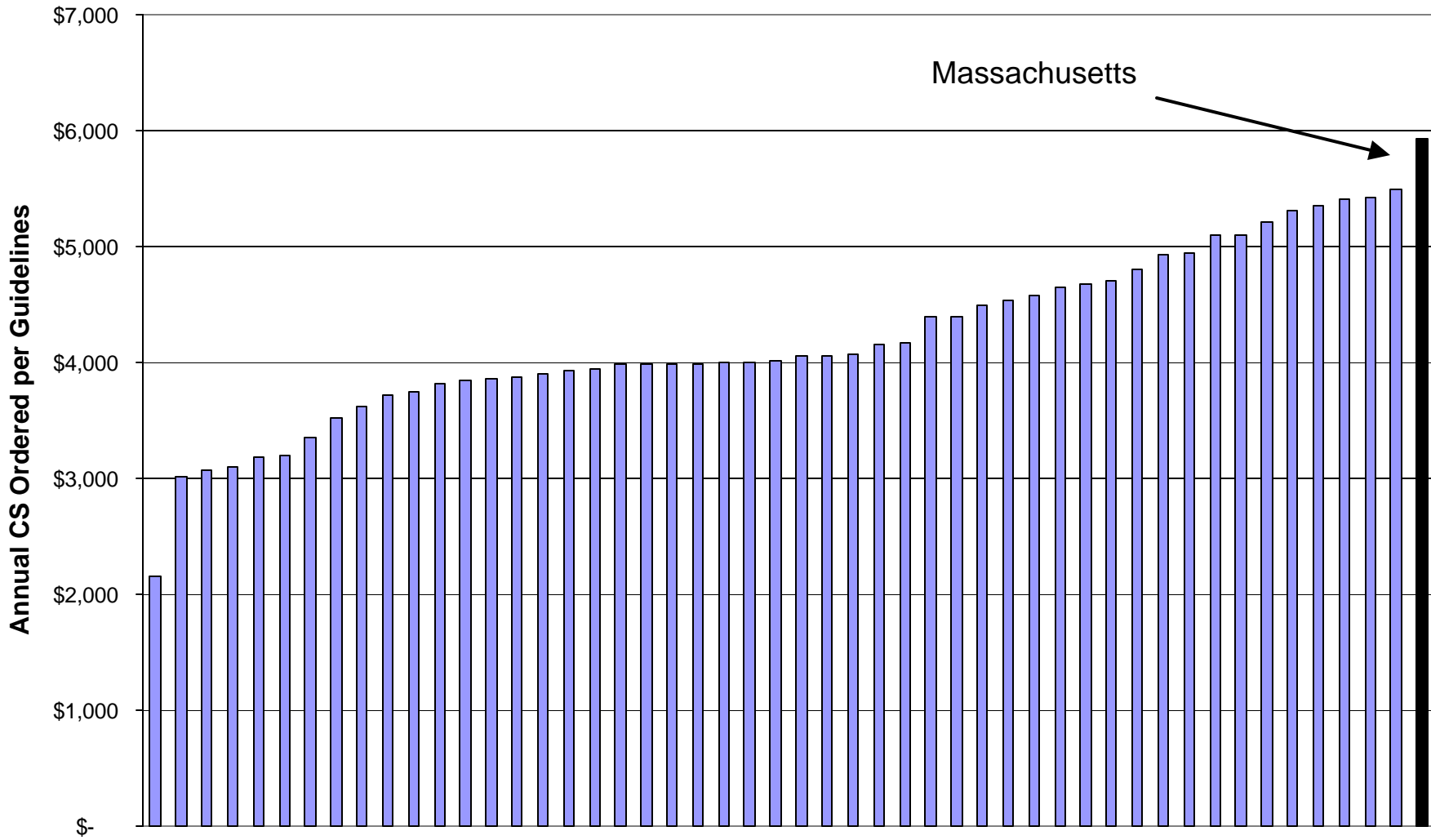
Fassler Case - Non-Cust Parent = \$45000 Cust Parent = \$30000  
One Child)



Fassler Case - Non-Cust Parent = \$15000 Cust Parent = \$15000  
(One Child)



Fassler Case - Non-Cust Parent = \$30000 Cust Parent = \$30000  
(One Child)



Fassler Case - Non-Cust Parent = \$50000 Cust Parent = \$50000  
(One Child)

